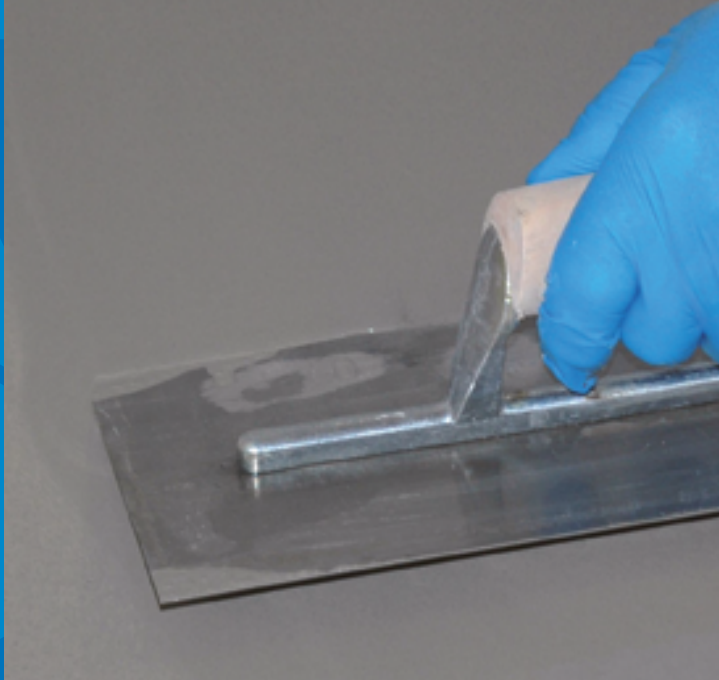


ULTRAPLAN RENOVATION SCREED 3240

Fibre reinforced self levelling compound - 3 to 40 mm in a single application



1121

DESCRIPTION

Ultraplan Renovation Screed 3240 is a fibre reinforced self levelling compound, designed for use in the refurbishment of existing floors in both commercial and domestic applications, it can be hand or pump applied.

WHERE TO USE

Used for interior levelling, smoothing and infilling differences in thickness from 3 to 40 mm on new or existing concrete, screeds, stone, terrazzo and ceramic tiles, old and new timber floors, floor boards, chipboard panels, plywood for use in dry locations as an underlayment (minimum P5 Grade) for floor finishes such as tile, stone, vinyl, carpet and wood flooring.

Ultraplan Renovation Screed 3240 is suitable where good resistance to loads is required, also for castor wheel traffic and underfloor and undertile heating systems.

APPLICATION

Apply in a single coat from 3 to 40 mm in thickness. To minimise aeration a spiked roller may be used. The self levelling properties of **Ultraplan Renovation Screed 3240** will provide a surface ready to accept all kinds of floorcoverings.

Preparation of the Substrate

The substrate should be solid, free of dust, loose particles, paint, oil, gypsum residues or other contamination that could compromise the bond. Timber substrates should be clean and solidly fixed, open joints should be sealed with **Planiprep Fix**. Cementitious surfaces that are not sufficiently compacted must be removed or, where possible, consolidated with **Profas** or **Primer EP**. Cracks in the substrate should be repaired with **Eporip**. The substrate should be primed with **Eco Prim Grip Plus** or **Eco Prim T Plus** prior to the application of **Ultraplan Renovation Screed 3240**.

For marine use apply a thin coat of MAPEI **Eco Prim Marine** onto the clean dry surface without leaving pools of primer on the surface. allow the primer to dry (35-40 minutes) then apply MAPEI **Ultraplan Renovation Screed 3240**.

Preparing the mix

Pour a 25 kg bag of **Ultraplan Renovation Screed 3240** into a bucket containing 4.25-4.5 litres of clean water and mix with a low speed electric mixer to obtain an homogeneous, self-levelling, lump free mix. Larger quantities of **Ultraplan**

Renovation Screed 3240 can be prepared in suitable mixers.

After 2-3 minutes of slackening, the mix should then be restirred and then it is ready for use.

The amount of **Ultraplan Renovation Screed 3240** mixed at any time must be used within 20 minutes (at a temperature of +23°C).

COVERAGE

Approx 6 m² at 3 mm thickness.

PACKAGING

25 kg bags.

STORAGE

12 months in a dry place and in the original un opened packaging.

SAFETY INSTRUCTIONS FOR PREPARATION AND APPLICATION

Instructions for the safe use of our products can be found on the latest version of the Safety Data Sheet, available from our website www.mapei.co.uk

PRODUCT FOR PROFESSIONAL USE.

TECHNICAL DATA

| TECHNICAL DATA (typical values) | |
|---|---|
| PRODUCT IDENTITY | |
| Consistency: | fine powder |
| Colour: | grey |
| Bulk density (kg/m ³): | 1,400 |
| Dry solids content (%): | 100 |
| EMICODE: | EC1 Plus – very low emission |
| APPLICATION DATA (at +23°C - 50% R.H.) | |
| Mixing ratio: | 4.25 to 4.5 litres of water per 25kg bag. |
| Thickness per coat: | 3 mm to 40 mm |
| Self-levelling: | yes |
| Specific gravity of mix (kg/m ³): | 2,100 |
| pH of mix: | approx. 12 |
| Application temperature range: | from +5°C to +30°C |
| Open time: | 20 minutes |

| | |
|--|---|
| Setting time: | 40-90 minutes |
| Walkable: | 3-12 hours |
| Waiting time before bonding: | ceramic tiles: 3-12 hours resilient and wood floors: 24-72 hours |
| FINAL PERFORMANCES (at +23°C and 50% R.H.) | |
| Compressive strength (N/mm ²): – after 1 day: – after 3 days: – after 7 days: – after 28 days: | 15 20 25 28 |
| Flexural strength (N/mm ²): – after 1 day: – after 3 days: – after 7 days: – after 28 days: | 3 4 4.5 5.5 |
| Resistance to abrasion: – after 28 days: | 2.5 |

N.B.

Whilst we try to ensure that any advice, recommendations or information given in our literature is accurate and correct, we have no control over the circumstances in which our product is used. It is therefore important that the end users satisfy themselves that the product and conditions are suitable for the envisaged application.

No warranty can be given or responsibility accepted other than, that the product supplied by us will meet our written specification. End users should ensure that our latest product data and safety information sheets have been consulted prior to use.

Please refer to the current version of the Technical Data Sheet, available from our website www.mapei.co.uk

LEGAL NOTICE

The contents of this Technical Data Sheet ("TDS") may be copied into another project-related document, but the resulting document shall not supplement or replace requirements per the TDS in force at the time of the MAPEI product installation.

The most up-to-date TDS can be downloaded from our website www.mapei.co.uk.

ANY ALTERATION TO THE WORDING OR REQUIREMENTS CONTAINED OR DERIVED FROM THIS TDS EXCLUDES THE RESPONSIBILITY OF MAPEI.

4048-7-2022 (UK)

Any reproduction of texts, photos and illustrations published here is prohibited and subject to prosecution.

